

Mounting Instructions for Navigation Lights



aqua signal 20

**Aqua[®]
signal**

aqua signal 20

Mounting Instructions

for Navigation Lights
Type AQUA SIGNAL Series 20

These navigation lights comply with the national and international regulations regarding minimum range of visibility, luminous intensity of horizontal and vertical sectors, and color specifications for powerboats of less than 12 meter in length, Regulations for Preventing Collisions at Sea, IMO 1972 and A-16.

However, their correct function will only be guaranteed and in conformance with the regulations if some important points are considered regarding mounting and maintenance. It is therefore essential to study the following pages attentively.

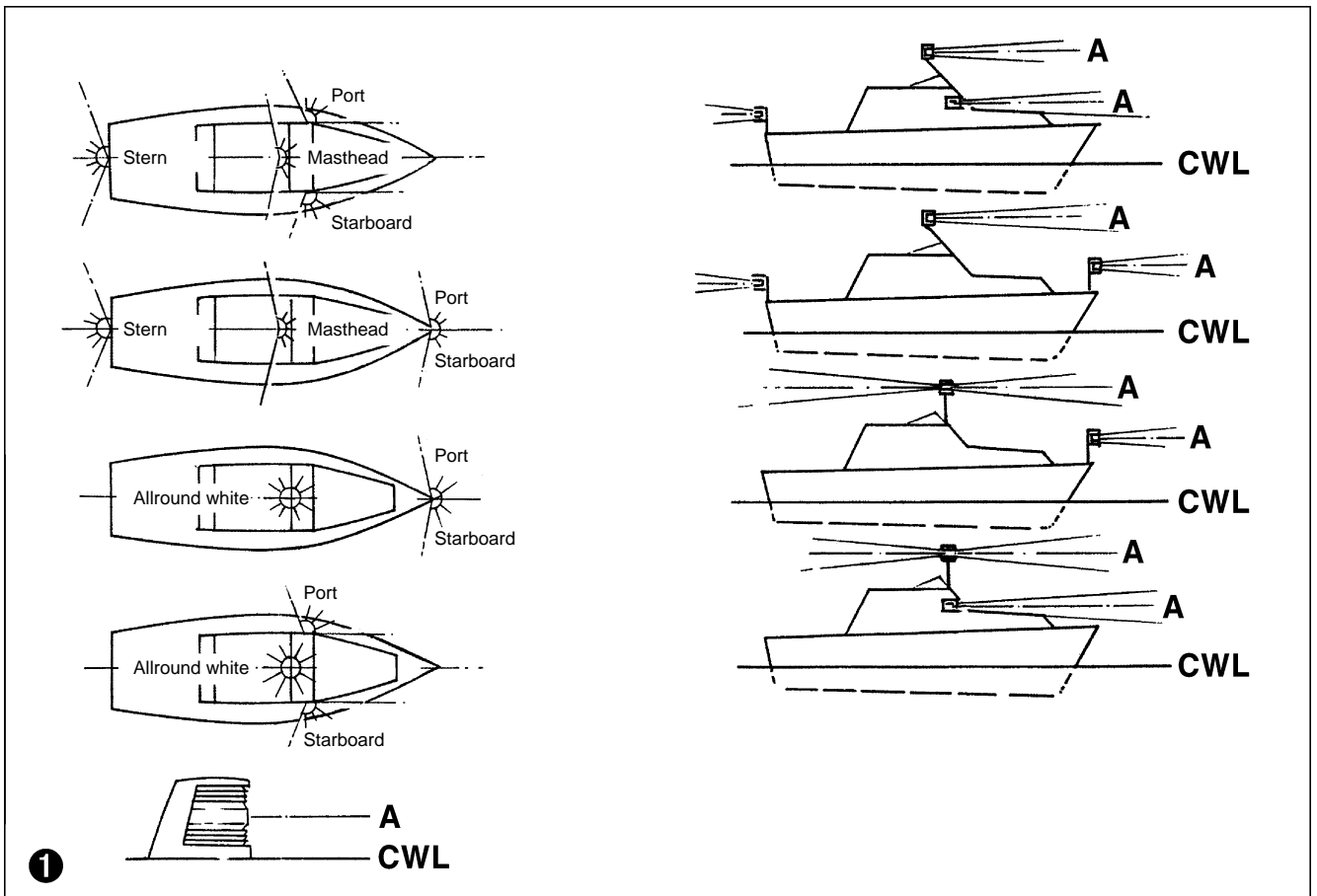
Regulations

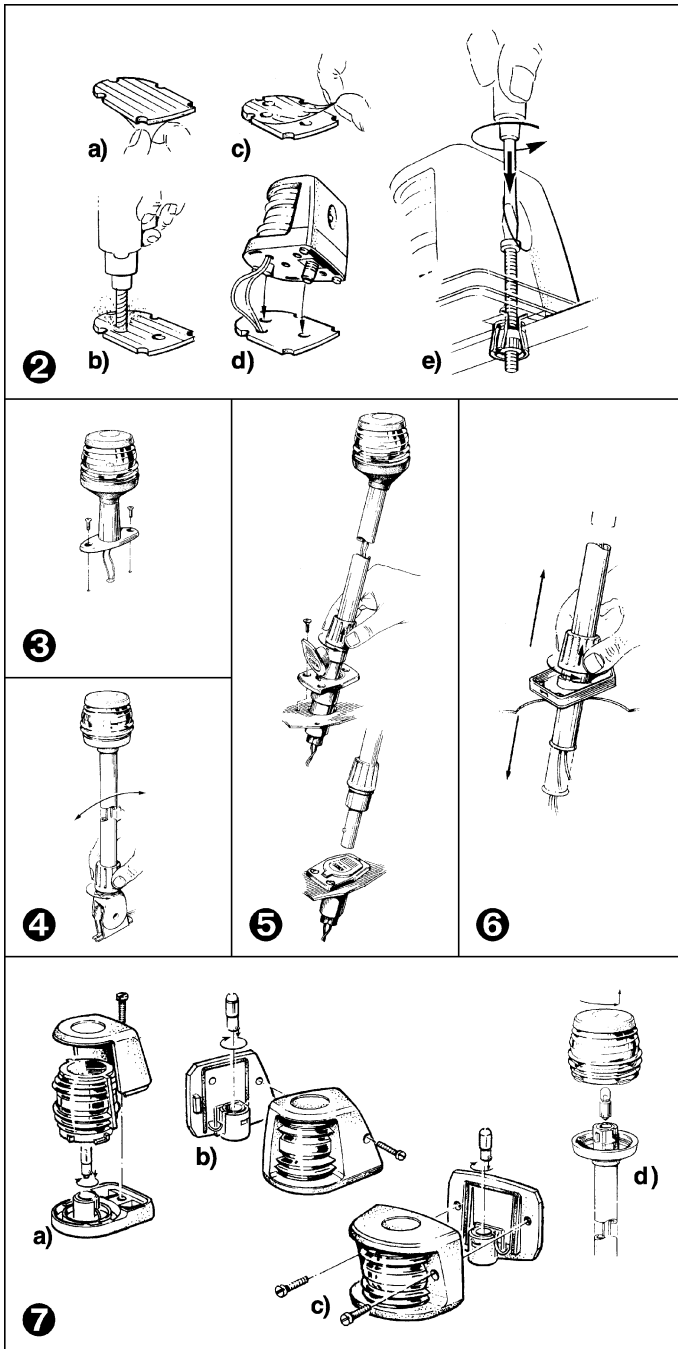
Positioning of the navigation lights on board has to be done in accordance with the International Regulations for Preventing Collisions at Sea, IMO 1972.

Mounting of navigation lights in general* ❶

The lights must be positioned in and above the keel line resp. parallel with it. Their horizontal plane (A) must be parallel with the construction water line (CWL).

Their light must not be obstructed by parts of the vessel or objects or persons aboard. Their relative positions to the vessels are not to be changed while in operation.





Mounting

Navigation lights AQUA SIGNAL Series 20

All navigation lights are prewired and need not to be disassembled for mounting.

2 Running lights

- a) Remove lower protection paper from template/gasket by appr. 1/3, align gasket, pull off rest of paper.
- b) Drill holes as indicated on template (1/4" or 6.4 mm)
- c) Remove upper protection paper.
- d) Feed connection wires through designated holes, push tight against gasket.
- e) Tighten set screw. (two screws when fitting transom mount stern light)

3 Allround White, pedestal (Power and Sail)

- a) Drill 2 holes for wires, min. 5/32" (4 mm)
- b) Drill 2 holes for #8 screws, connect wires and tighten screws. (2 countersink holes Ø 11/64" or 4,3 mm on fixture.)

4 Navigation Lights on „fold down“ mast

- a) Drill 2 holes for # 10 screws, where applicable 3rd hole for wires (min. 5/32" or 4 mm). 3 holes diameter 3/15" or 4,9 mm predrilled on fixture.
- b) Connect wires, tighten screws.
- c) Anticlockwise turn of nut will disengage locking mechanism, adjust mast to an upright position and tighten nut.

5 Navigation Lights on „plug in“ mast

- a) Use gasket supplied as template. Cut hole of appr. 1 5/16" (33,4 mm), observe 15° tilt of base.
- b) Drill 3 holes to accept 3 #10 screws (holes on fixture diam. 7/32" or 5,5 mm), connect wires and tighten screws.
- c) Plug in light, secure light by turnings screw left of right.
- d) When not in use close base with rubber cover supplied.

6 Navigation Lights on „slide in“ mast

- a) Use gasket supplied as template. Cut hole of appr. 1 5/16" (33,4 mm), observe 15° tilt of base.
- b) Drill 3 holes to accept 3 #10 screws (holes on fixture diam. 7/32" or 5,5 mm), connect wire and tighten screws.
- c) Slide in light, adjust right ahead position (where applicable) and tighten screw by left or right.

7 Change of bulb

- a) **Bicolour, masthead, stern**
Loosen set screw, remove top part, take off lens by turning it anti-clockwise and change bulb. Assembly in reverse order.
- b) **Side lights - port and starboard**
Loosen set screw, remove housing/lens, change bulb. Assembly in reverse order.
- c) **Stern light**
Loosen set screws, remove housing/lens, change bulb. Assembly in reverse order.
- d) **Allround lights**
Turn fresnel lens anti-clockwise, change bulb, assembly in reverse order.

Maintenance

All the components of the light are made of seawater resistant materials and need no particular maintenance except occasional cleaning. For cleaning just take fresh water and a soft cloth or sponge, by no means solvents or abrasive substances.

Important

Navigation light housings are not to be painted for photometric reasons. Especially the optics and other parts like shades must not be covered with paint.

aqua signal reserves the right to modify their products without prior notice to not impede progress in technology or design.



ATTENTION

Bulbs for Navigation Lights

The bulbs used in Navigation Lights are part of the approval/certification.

Bulbs which are non-approved null-void your insurance cover as your lights will not be in line with the regulations/certification.

We recommend to use approved material only since this is in the interest of your safety.

20_07_GB

aqua signal Aktiengesellschaft
P.O.Box 45 01 61
D-28295 Bremen, Germany
Phone:+49 421 48 93 - 0
Fax: +49 421 48 93 210/- 310
e-mail: info@aquasignal.de
Internet: <http://www.aquasignal.de>

